

Ying WANG

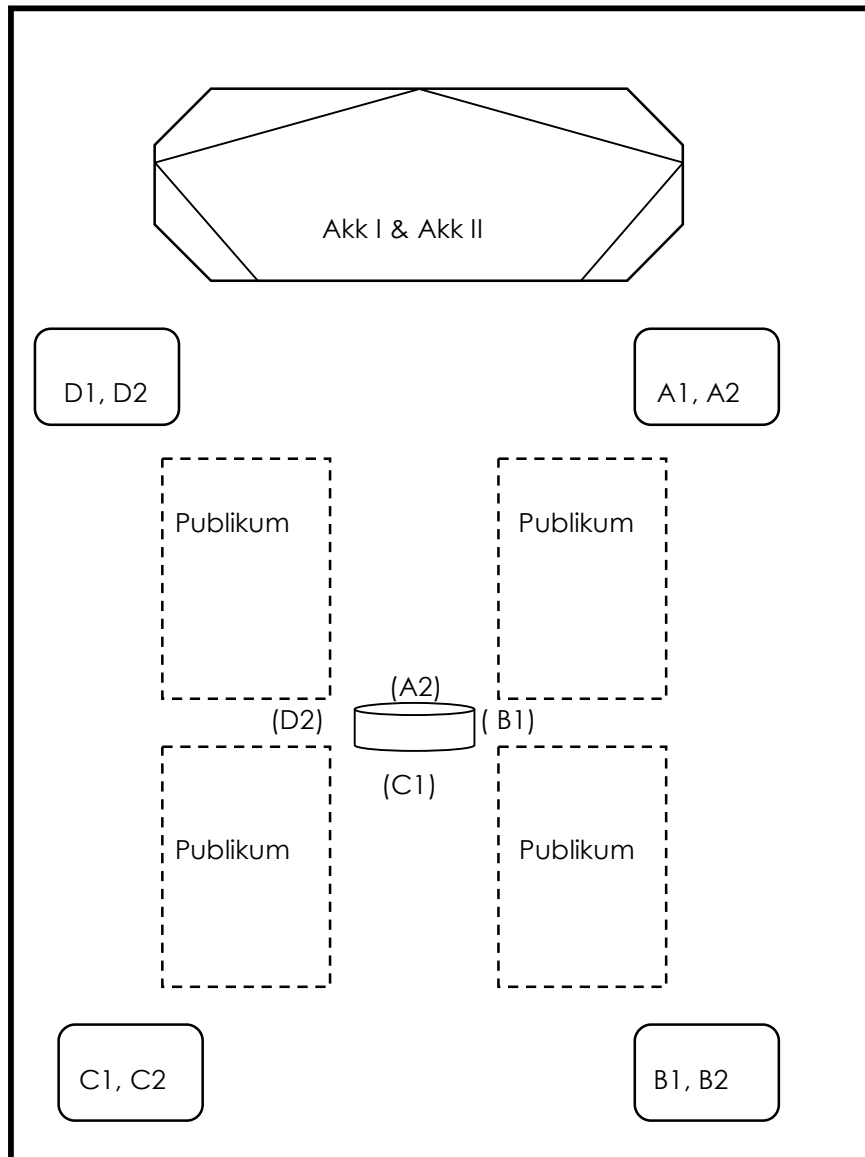
FOCUS – SPALTUNG

für Percussion Ensemble und Akkordeon
2012

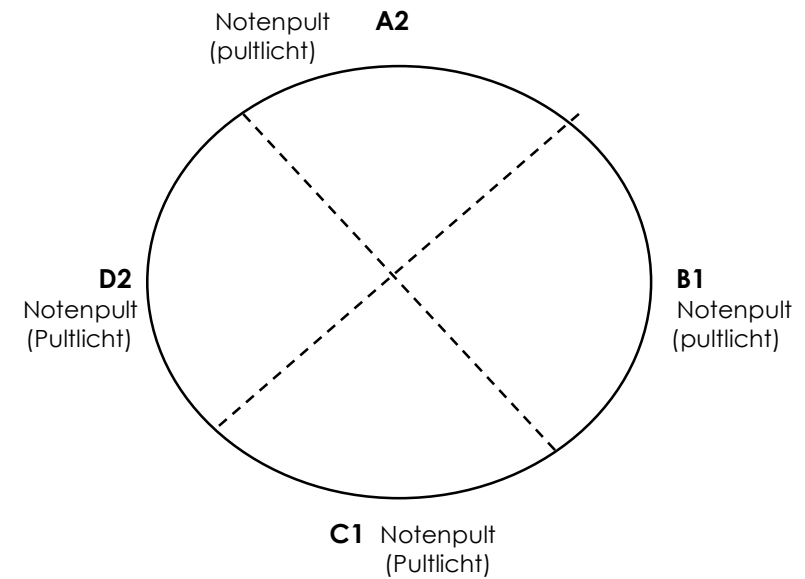
Auftrageskomposition des Landesmusikrat NRW

UA: 28.10.2012, Slazlager, Kokerei Zollverein, Essen
Clemens Berhard Winter, Peter Lohmar Akkordeon und ENSEMBLE SPLASH NRW

Bühne



Position Zentrum (Basstrom)



Hinweis Bühne

- Akkordeon 1 und 2 spielen in die weiße Skulptur während die teil III
- A2, B1, C1 und D2 laufen zum Basstrom(Zentrum) am Anfang die Teil IV
- Bei Basstrom(Zentrum) benötigt vier Notenpulte mit Pultlicht
- Bei Akkordeon I und II benötigt Notenpulte mit Pultlicht
- Akkordeon I & II mit Ratchet

Percussion instruments

Group A (2 players, A1&A2)

3 Cowbells
 2 Button Gong
 1 Bell Tree
 1 Chinese small Cymbals
 1 Suspended Cymbal
 1 Slide Flute
 1 Cabassa
 1 Sleight Bell
 1 Crotale (a, #f)
 1 Tambourin

 5 Tempel Blocks
 1 Slit Drum
 1 Claves
 1 Whip
 1 Waldteufel (small)
 2 Waldteufel (big)
 1 Nuts Shell

 2 Roto-Toms (10", 14")
 1 Timpani (32"/30")
 1 Tom-tom
 1 Conga
 1 Timbale
 1 Bass Drum
 (minimal 56x46)

Akkordeon I & II Ratchet

Group B (2 players, B1&B2)

4 Cowbells
 2 Agogo
 1 Maracas
 1 Tam-tam
 1 Glissando Gong (Jing Gong)
 1 Chinese Cymbals
 1 Sleight bell
 1 Big glass bowl
 (water, glissando gong)
 1 Cabassa
 1 Crotales (g, b, #d)
 1 Tambourin
 1 Ssuspended Cymbal

 4 Wood blocks
 1 Slit Drum
 1 Clavers
 1 Ratchet
 1 Guiro
 1 Waldteufel (small)
 2 Waldteufel (big)
 1 whistle

 2 Tom-toms(high, low)
 1 Timpani (29"/28")
 1 Conga
 1 Bongo
 1 Timbale
 1 Lion's roar

Group C (2 players, C1&C2)

4 Cowbells
 1 Glissando Gong
 1 Flexatone
 1 Automobile Spring
 1 Xiao bo (chinese Becken)
 1 Ratchet
 1 Suspended Cymbal
 1 Tambourin
 1 Big glass bowl
 (water, glissando gong)

 4 Tempel Blocks
 1 Slit Drum
 1 Claves
 1 Cabassa
 1 whip
 1 Waldteufel (small)
 1 Waldteufel (big)
 1 wood shells tree
 1 Ratchet

 4 Roto toms
 (8", 12", 16", 18")
 1 Timpani (23")
 1 Conga
 1 bongo

Group D (2 players, D1&D2)

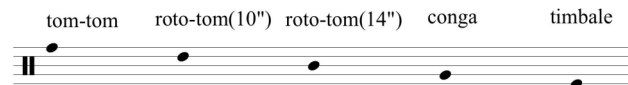
3 Cowbells
 1 Agogo
 1 Automobile spring
 1 Tam-tam
 1 Suspendeds Cymbal
 1 Finger Cymbals
 1 Triangel
 1 Whistle

 5 Wood blocks
 1 Slit Drum
 1 Vibra slap
 1 Ratsche
 1 Maracas
 1 Waldteufel (small)
 1 Waldteufel (big)
 1 Nuts Schell
 1 Guiro

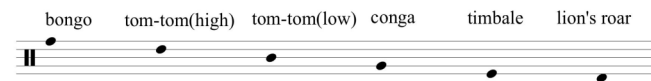
 3 Tom-toms(high, mi, low)
 1 Timpani (25"/26")
 1 Conga
 1 Bongo
 1 Lions roar

Drum set

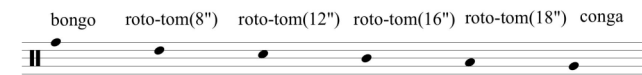
Group A (A1 & A2)



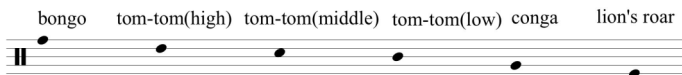
Group B (B1 & B2)



Group C (C1 & C2)



Group D (D1 & D2)



Mallets

for all



a pair of soft timpani mallets



a pair of medium hard timpani mallets



a pair of hard timpani mallets



a pair of wire brushes



a pair of steel mallets



a pair snare drum sticks



a pair yarn medium hard mallets



bass drum beater



a pair of rubber mallets



a pair of wooden mallets



or brush



mute immediately after play

Superball Mallets

Individual

B2: doublebass bow for crotales

Group B and C:



big glass bowl with water

FOCUS-SPALTUNG

für Percussion Ensemble und Akkordeon

Ying WANG
(1976*)

♩ = 64

Group A

Percussion A1: cowbell, s.cymbal, bell tree

Percussion A2: chinese small cymbals, cowbell, button gong

Group B

Percussion B1: s.cymbal

Percussion B2: crotales, bow, tam-tam

Group C

Percussion C1: gong, automobile spring

Percussion C2: cowbells, s.cymbal

Group D

Percussion D1: tam-tam, s.cymbal, tam-tam

Percussion D2: tam-tam, superball (rub of the surface), automobile spring

©Copyright 2012 Ying WANG

